



BIA010

Monocomando Lavatório

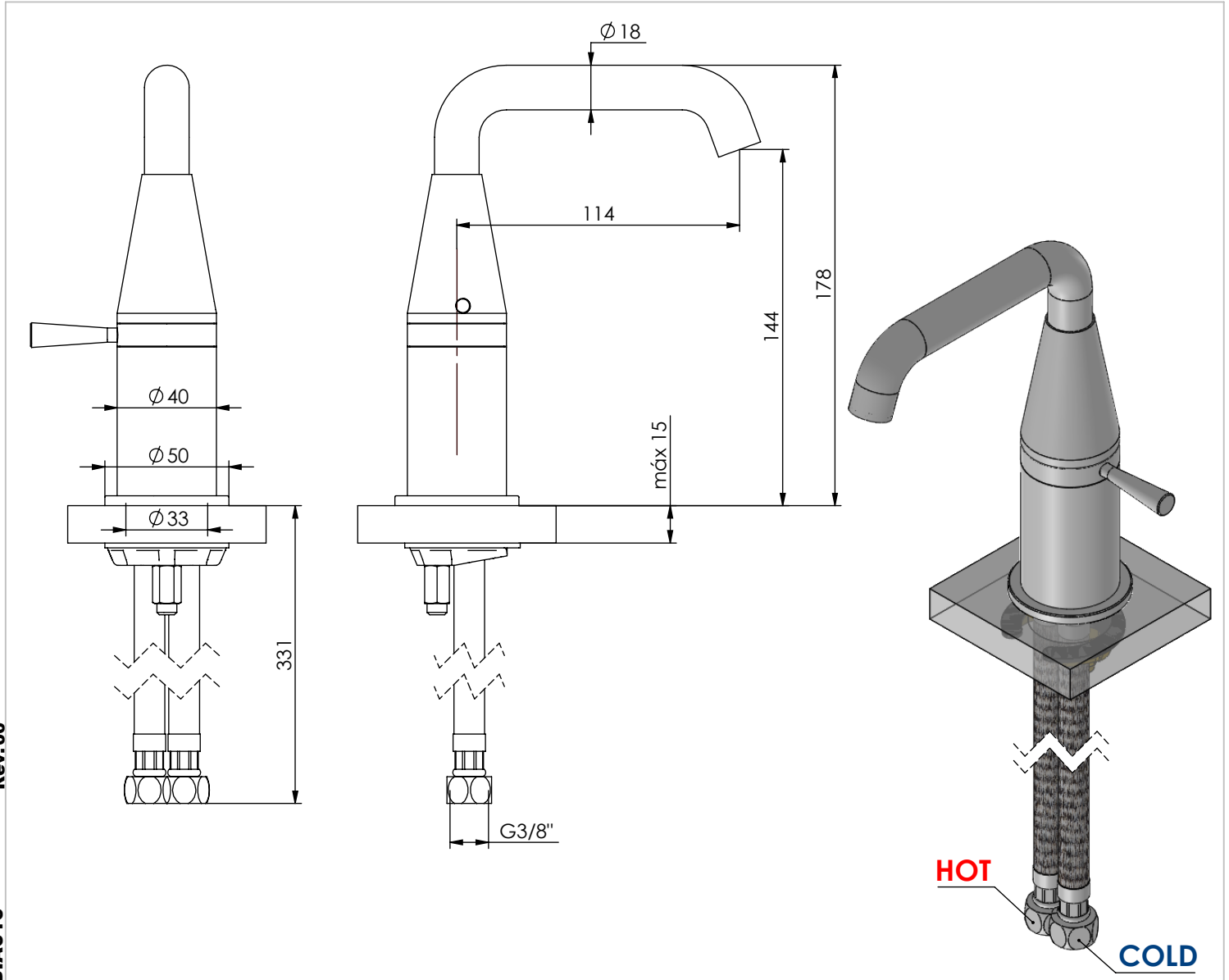


ASM TAPS[®]
WATER SOUL

EN WASHBASIN MIXER BIA

FR MITIGEUR LAVABO BIA

ES MONOMANDO LAVABO BIA



Rev.00

BIA010

CARACTERÍSTICAS TÉCNICAS

PRESSÃO RECOMENDADA:
RECOMMENDED PRESSURE: 3 - 4 BAR

TEMPERATURA RECOMENDADA:
RECOMMENDED TEMPERATURE: 15°C - 65°C

MATERIAIS:
MATERIALS: Latão

TEMPERATURA MÁXIMA:
MAXIMUM TEMPERATURE: 70°C

CAUDAL MÁXIMO A 3 BAR:
MAXIMUM FLOW AT 3 BAR: L/MIN

LIGAÇÃO DE ENTRADA:
INPUT CONNECTION: G1/2"

LIGAÇÃO DE SAÍDA:
OUTPUT CONNECTION: G1/2"

PESO (KG):
WEIGHT (KG): 1,15

DIMENSÕES EMBALAGEM (MM):
SIZE PACKAGING (MM): 270x235x80

ACABAMENTOS

CR - CROMADO | CHROME | CHROME | CROMO

PR - PRETO MATE | BLACK MATT | NOIR MAT | NEGRO MATE

BR - BRANCO MATE | WHITE MATT | BLANC MAT | BLANCO MATE

ST - SATINOX | SATINOX | SATINOX | SATINOX

AT - ANTRACITE | ANTHRACITE | ANTHRACITE | ANTRACITA

GM - GUNMETAL | GUNMETAL | GUNMETAL | GUNMETAL

GMM - GUNMETAL MATE | GUNMETAL MATT | GUNMETAL MAT | GUNMETAL MATE



OR - DOURADO | GOLD | DORÉ | DORADO

ORM - DOURADO MATE | GOLD MATT | DORÉ MAT | DORADO MATE

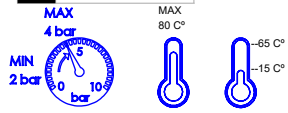
CB - COBRE | COPPER | CUIVRE | COBRE

CBM - COBRE MAT | COPPER MAT | CUIVRE MAT | COBRE MATE

TECNOLOGIA

- *  Perlator Embutido
Built-In Aerator
- *  AC1660 - Cartucho Ø35 Progressivo
AC1660 - Progressive Cartridge Ø35
- * .
- * .
- * .
- * .
- * .

! SERVICE

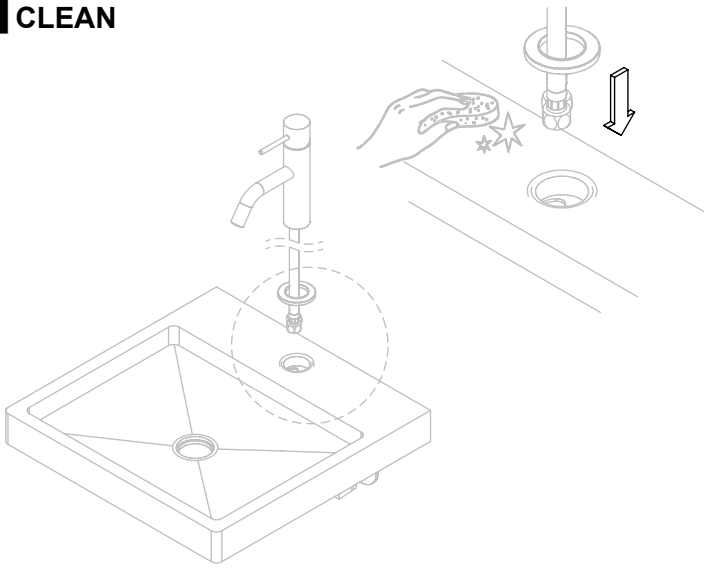


A S M T A P S

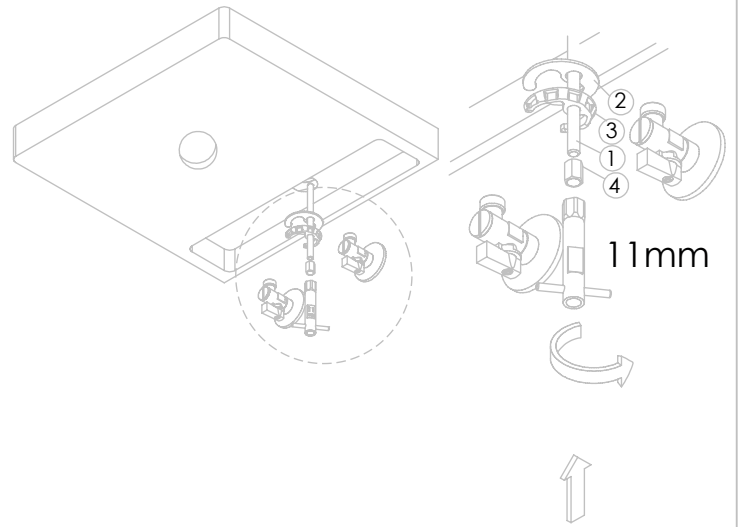
W A T E R S O U L

INSTALLATION MANUAL

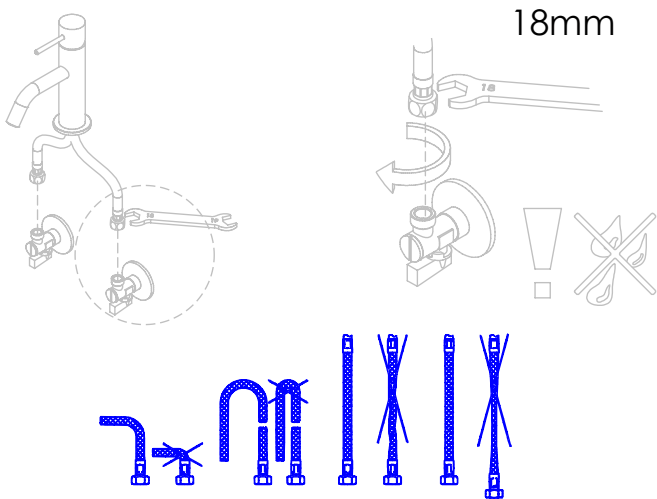
1 CLEAN



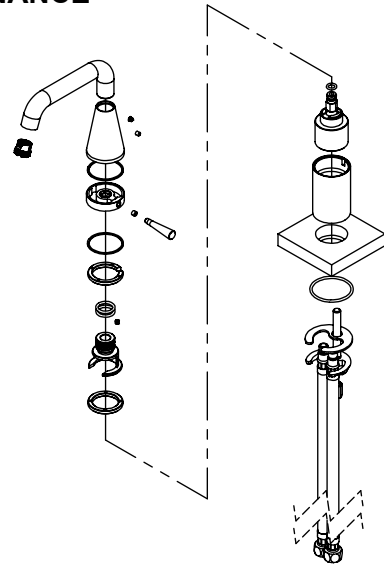
2 FIXED



3 FIX IT



4 MAINTENANCE



5

6