



ASM TAPS®

WATER SOUL

# PLAN80B2

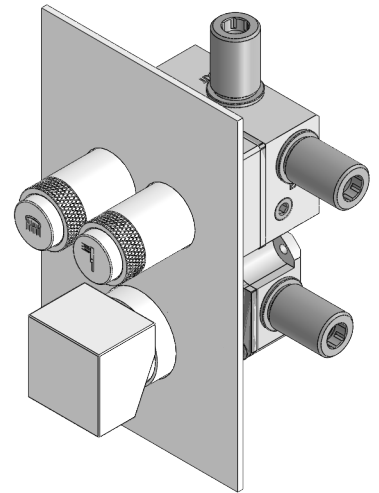
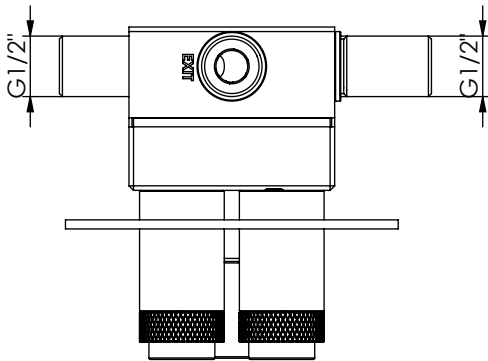
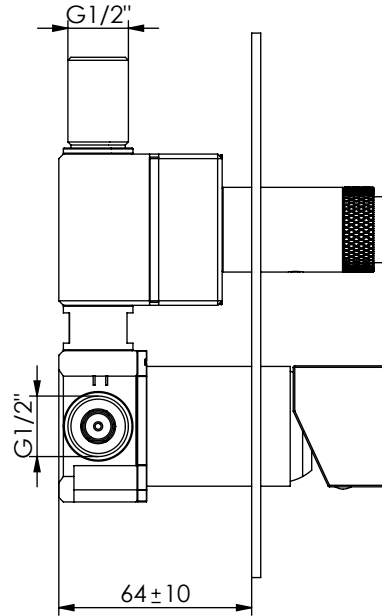
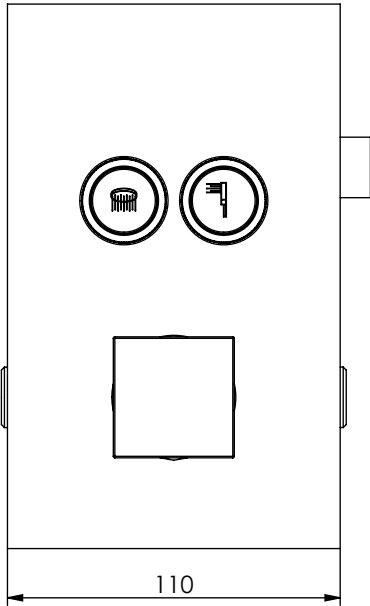
MONOCOMANDO DUCHE EMBUTIR CLIC 2 VIAS PLAN

**EN** CONCEALED CLIC 2 WAY SHOWER MIXER PLAN

**FR** MITIGEUR DOUCHE ENCASTRÉ CLIC 2 VOIES PLAN

**ES** MONOMANDO DUCHA EMPOTRAR CLIC 2 VIAS PLAN

FOTO OBSOLETA



Rev.00 05/08/2024

PLAN80B2

## CARACTERÍSTICAS TÉCNICAS

PRESSÃO RECOMENDADA:  
RECOMMENDED PRESSURE: 3 - 4 BAR

TEMPERATURA RECOMENDADA:  
RECOMMENDED TEMPERATURE: 15°C - 65°C

MATERIAIS:  
MATERIALS: Latão

TEMPERATURA MÁXIMA:  
MAXIMUM TEMPERATURE: 70°C

CAUDAL MÁXIMO A 3 BAR:  
MAXIMUM FLOW AT 3 BAR: L/MIN

LIGAÇÃO DE ENTRADA:  
INPUT CONNECTION: G1/2"

LIGAÇÃO DE SÉIDA:  
OUTPUT CONNECTION: G1/2"

PESO (KG):  
WEIGHT (KG): NC

DIMENSÕES EMBALAGEM (MM):  
SIZE PACKAGING (MM): 285x200x170

## ACABAMENTOS

CR - CROMADO | CHROME | CHROME | CROMO

PR - PRETO MATE | BLACK MATT | NOIR MAT | NEGRO MATE

BR - BRANCO MATE | WHITE MATT | BLANC MAT | BLANCO MATE

ST - SATINOX | SATINOX | SATINOX | SATINOX

AT - ANTRACITE | ANTHRACITE | ANTHRACITE | ANTRACITA

GM - GUNMETAL | GUNMETAL | GUNMETAL | GUNMETAL

GMM - GUNMETAL MATE | GUNMETAL MATT | GUNMETAL MAT | GUNMETAL MATE




OR - DOURADO | GOLD | DORÉ | DORADO

ORM - DOURADO MATE | GOLD MATT | DORÉ MAT | DORADO MATE

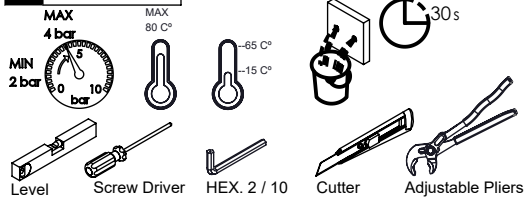
CB - COBRE | COPPER | CUIVRE | COBRE

CBM - COBRE MAT | COPPER MAT | CUIVRE MAT | COBRE MATE

## TECNOLOGIA

-  AC2140 - Válvula on/off fit FSG D6 control volume  
AC2140 - Fit FSG D6 on/off clic valve
-  AC540C - Cartucho Ø35  
AC540C - Cartridge Ø35
-  Embutido a parede  
Built-in to wall

# ! SERVICE



# PLAN80B2

## MONOCOMANDO DUCHE EMBUTIR CLIC 2 VIAS PLAN

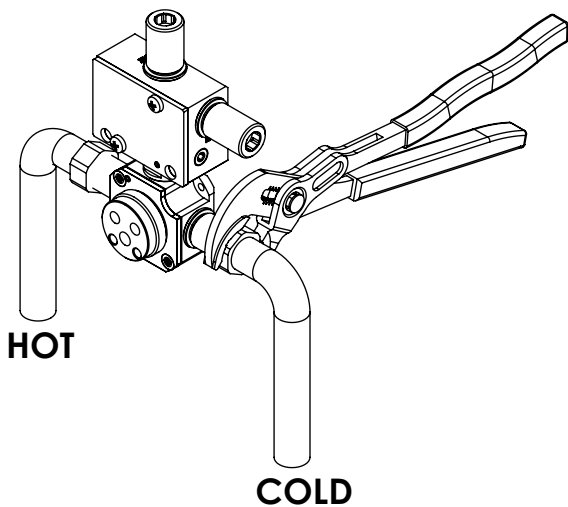


A S M T A P S ®

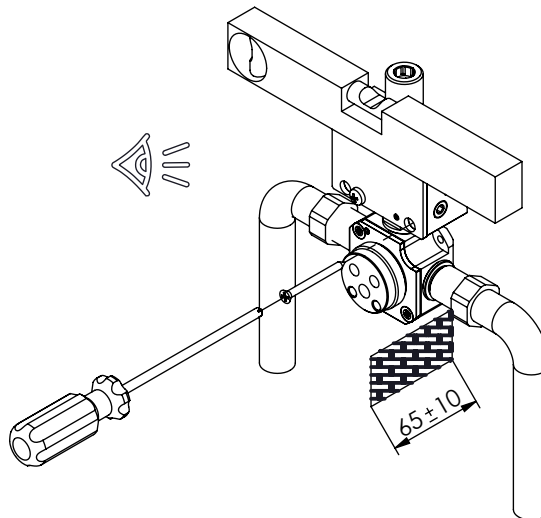
W A T E R S O U L

### INSTALLATION MANUAL

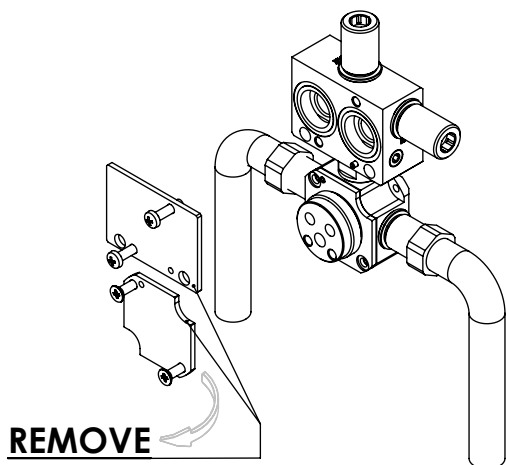
#### 1 CONECTION



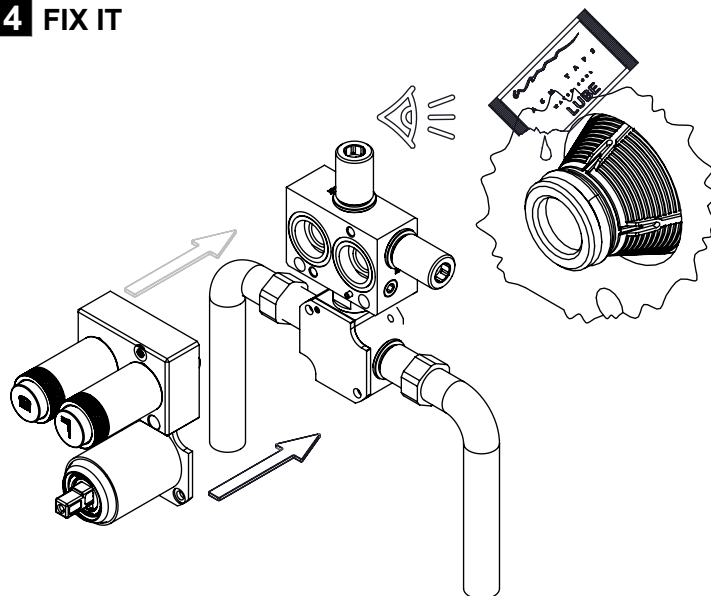
#### 2 FIXED



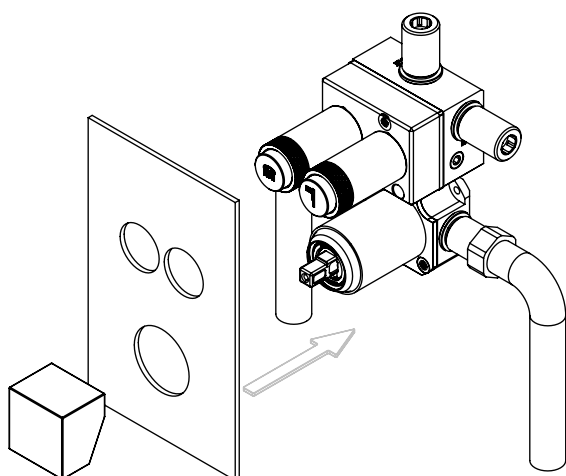
#### 3 REMOVE PROTECTION



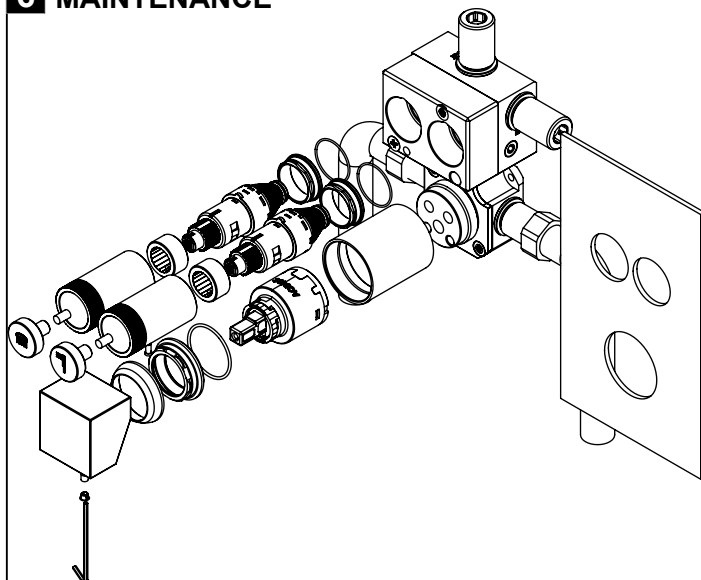
#### 4 FIX IT



#### 5 FIX IT



#### 6 MAINTENANCE



PLAN80B2 Rev.00 05/08/2024