

# TERCLUX090A

MISTURADORA EMBUTIR  
TERMOSTÁTICA 3 VIAS LUX

EN *CONCEALED 3 WAY THERMOSTATIC  
MIXER LUX*

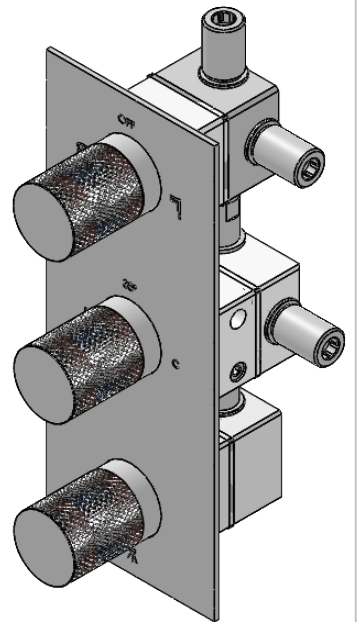
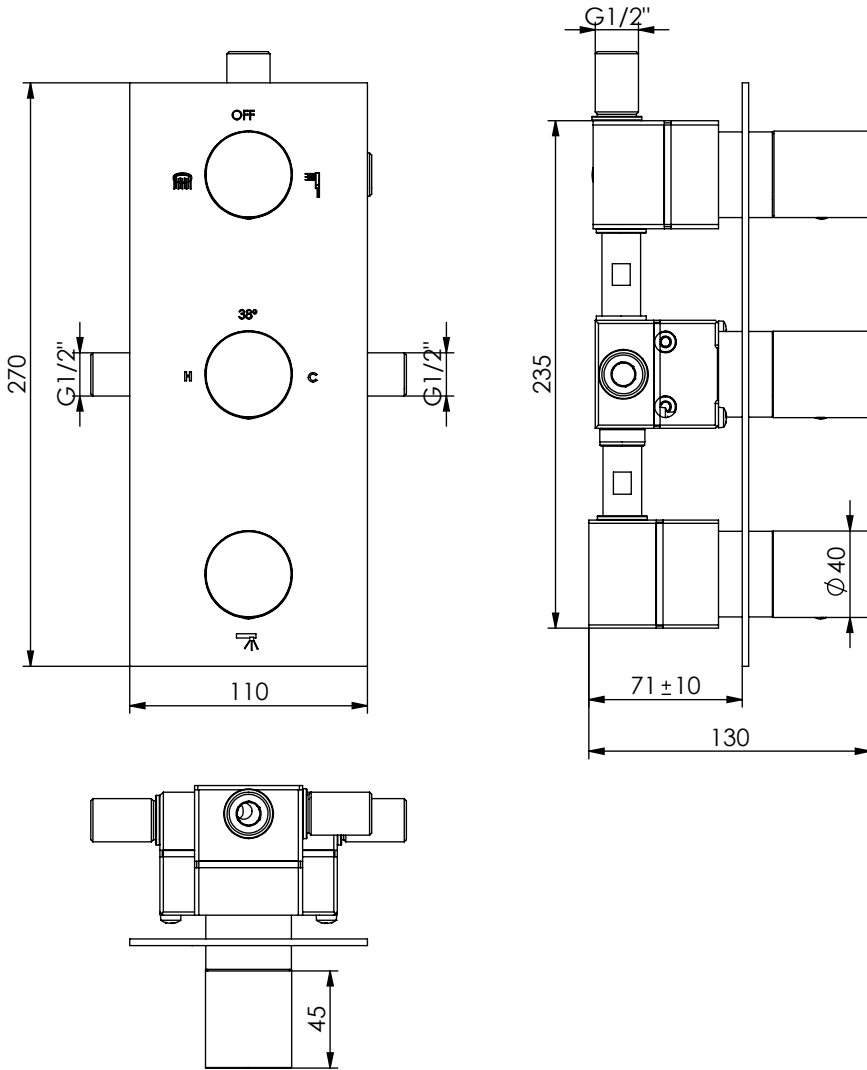
FR *MÉLANGEUR ENCASTRÉ 3 VOIES  
THERMOSTATIQUE LUX*

ES *MEZCLADOR EMPOTRAR 3 VIAS  
TERMOSTÁTICO LUX*



A S M T A P S

WATER SOUL



Rev.00  
TERCLUX090A

## CARACTERÍSTICAS TÉCNICAS

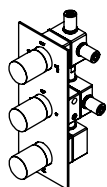
PRESSÃO RECOMENDADA: RECOMMENDED PRESSURE:	3 - 4 BAR
TEMPERATURA RECOMENDADA: RECOMMENDED TEMPERATURE:	15°C - 65°C
MATERIAIS: MATERIALS:	Latão
TEMPERATURA MÁXIMA: MAXIMUM TEMPERATURE:	70°C
CAUDAL MÁXIMO A 3 BAR: MAXIMUM FLOW AT 3 BAR:	L/MIN
LIGAÇÃO DE ENTRADA: INPUT CONNECTION:	G1/2"
LIGAÇÃO DE SAÍDA: OUTPUT CONNECTION:	G1/2"
PESO (KG): WEIGHT (KG):	4,3
DIMENSÕES EMBALAGEM (MM): SIZE PACKAGING (MM):	285x200x170

## ACABAMENTOS

CR - CROMADO   CHROME   CHROME   CROMO
PR - PRETO MATE   BLACK MATT   NOIR MAT   NEGRO MATE
BR - BRANCO MATE   WHITE MATT   BLANC MAT   BLANCO MATE
ST - SATINOX   SATINOX   SATINOX   SATINOX
AT - ANTRACITE   ANTHRACITE   ANTHRACITE   ANTRACITA
GM - GUNMETAL   GUNMETAL   GUNMETAL   GUNMETAL
GMM - GUNMETAL MATE   GUNMETAL MATT   GUNMETAL MAT   GUNMETAL MATE
OR - DOURADO   GOLD   DORÉ   DORADO
ORM - DOURADO MATE   GOLD MATT   DORÉ MAT   DORADO MATE
CB - COBRE   COPPER   CUIVRE   COBRE
CBM - COBRE MAT   COPPER MAT   CUIVRE MAT   COBRE MATE

## TECNOLOGIA

- \* AC1360-CASTELO CERÁMICO 1/2" 1/4 VOLTA  
AC1360-CERAMIC VALVE 1/2" 1/4 TURN
- \* AC1180 - Distribuidor Misturadora Termostática  
AC1180 - Distributor Thermostatic Mixer
- \* AC1940 - Cartucho Termostático Mini Kerox  
AC1940 - Mini Thermostatic Cartridge Kerox
- \* Embutido a parede  
Built-in to wall
- \* Termostática  
Thermostatic
- \* .
- \* .
- \* .



# TERCLUX090A

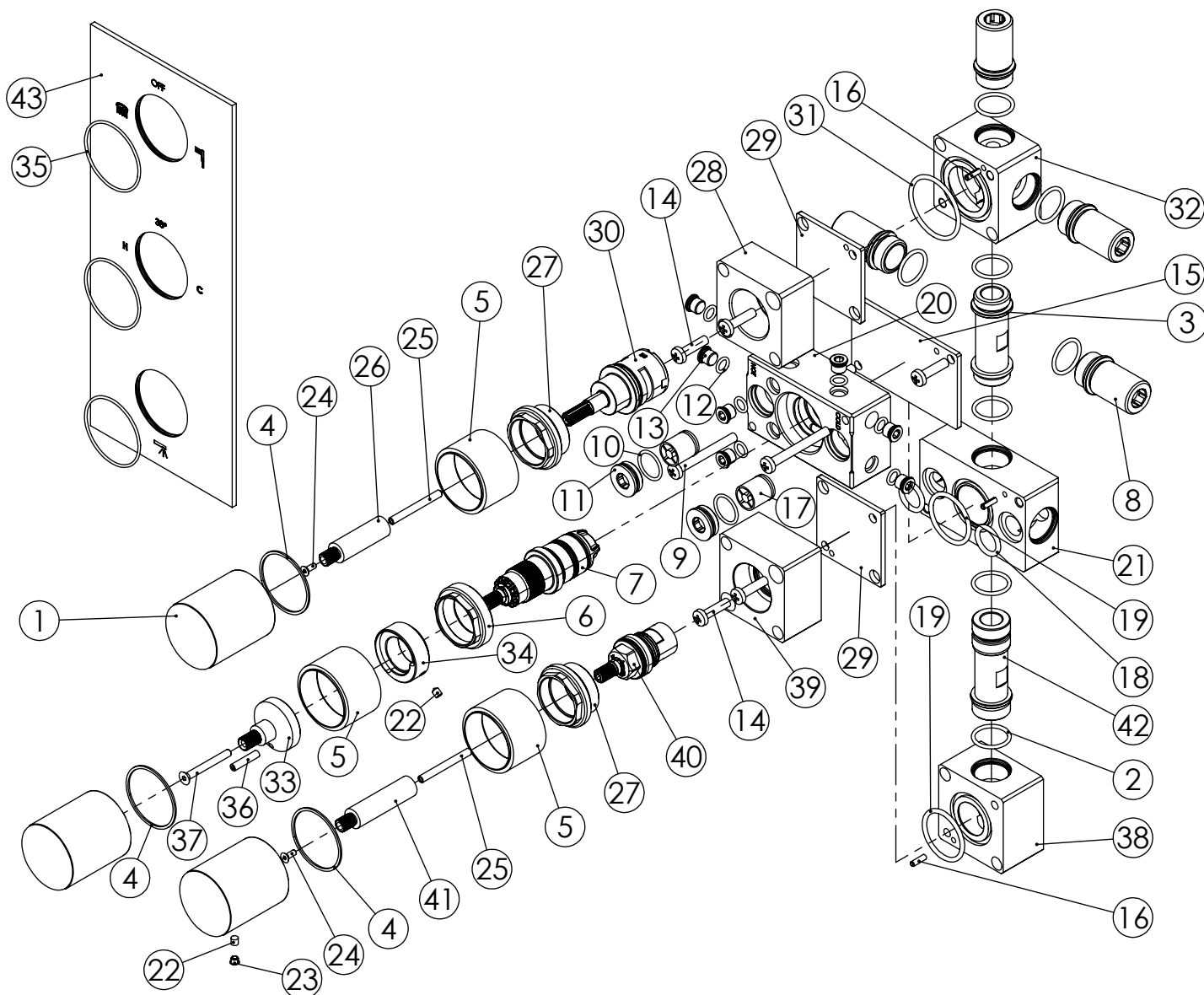
## MISTURADORA EMBUTIR TERMOSTÁTICA 3 VIAS LUX



ASM TAPS

WATER SOUL

### LISTA DE COMPONENTES

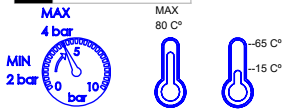


TERCLUX090A Rev.0

Nº	DESCRIPTION	REF.	QT.
1	MANIPULO CILINDRICO P DISTRIBUIDOR RECARTEILHADO	101297	3
2	ORINGS 18.00x2.00 NBR 70	001383	8
3	EMBÔLO	CRIAR	1
4	Anilho Nylon Ø35x38x1	T112378	3
5	Campânula Cartucho Mist. Embutir Termostática 2 Vias	100636	3
6	Porca Cartucho Termostática 2 Vias	100558	1
7	CARTUCHO TERMOSTÁTICO MINI KEROX	AC1940	1
8	CASQUILHO LONGO G1-2 G1-2 BOX	101362	4
9	PARF. DIN 7985 PH M 5x45 - IN	7985205004501 N	2
10	Orings 15.10x1.60 NBR 70	001210	2
11	Tampa P-Válvula	101101	2
12	Orings 6.50x1.60 NBR 70	001201	8
13	TACO DE VEDAÇÃO M8x1	101361	8
14	Paraf. Din 7985 PH M 5x20 - IN	7985205002001 N	6
15	TAMPA PROTEÇÃO CORPO EMBUTIDO TERMOSTÁTICO	101359	1
16	CAVILHA ELÁSTICA DIN 1481 Ø 3X10 INOX A-2	14810300100IN	3
17	Válvula Anti Retorno DW15/DN10-PR	AC1890	2
18	Orings 13.60x2.70 NBR 70	001862	2
19	ORINGS 27.00x2.50 NBR 70	021016	2
20	CORPO EXTERIOR TERMOSTÁTICO COM VÁLVULAS	101353	1
21	CORPO INTERIOR TERMOSTÁTICO COM VÁLVULAS	101352	1
22	Perno Umbrako Din 914 M4-5 Inox A-2	09140400050IN	4
23	Dístico em ABS de 5.5mm Cromado	LH-PLCR4	3
24	Parafuso Embeber M3x8	79910300080IN	2

Nº	DESCRIPTION	REF.	QT.
25	Parafuso Distr. Mist. Embutir Termostática 2 Vias	100560	2
26	Varão Distr. Mist. Embutir Termostática 2 Vias	100556	1
27	Aumento Distribuidor Termostática 2 Vias	100557	2
28	CORPO DISTRIBUIDOR EXTERIOR TERMOSTÁTICA 2 VIAS 090C	101371	1
29	TAMPA PROTEÇÃO BLOCO EMBUTIDOS	101340	2
30	Cartucho Distribuidor Termostática	AC1180	1
31	Orings 34.60x2.40 NBR 70	001542	1
32	CORPO DISTRIBUIDOR INTERIOR TERMOSTÁTICA 2 VIAS 090C	101370	1
33	Aumento Cartucho Termostático 2 Vias	101182	1
34	Limitador Cartucho Termostático Ø24	101178	1
35	Orings 40.00x1.50 NBR 70	021286	3
36	Perno Umbrako Din 914 M4-20 Inox A-2	09160400200IN	1
37	Parafuso Embeber M4x35	79910400350IN	1
38	CORPO DISTRIBUIDOR INTERIOR TERC090A	101373	1
39	CORPO DISTRIBUIDOR EXTERIOR TERC090A	101374	1
40	Cartucho Cerâmico 90º	AC1360	1
41	CRIAR VARÃO TERC090A	CRIAR	1
42	LIGAÇÃO	CRIAR	1
43	Espelho TERC090A	100514	1

# SERVICE



30s

# TERCLUX090A

MISTURADORA EMBUTIR  
TERMOSTÁTICA 3 VIAS LUX

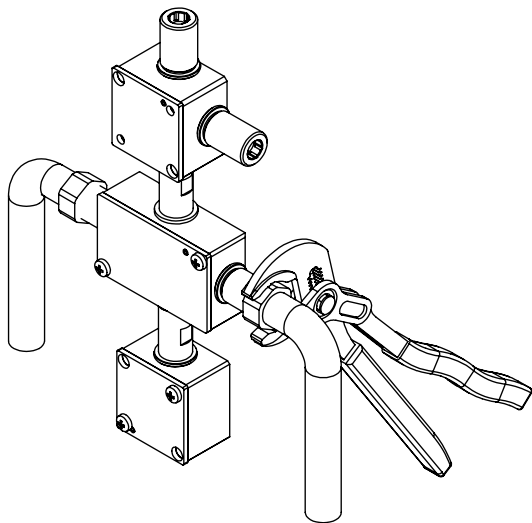


A S M T A P S

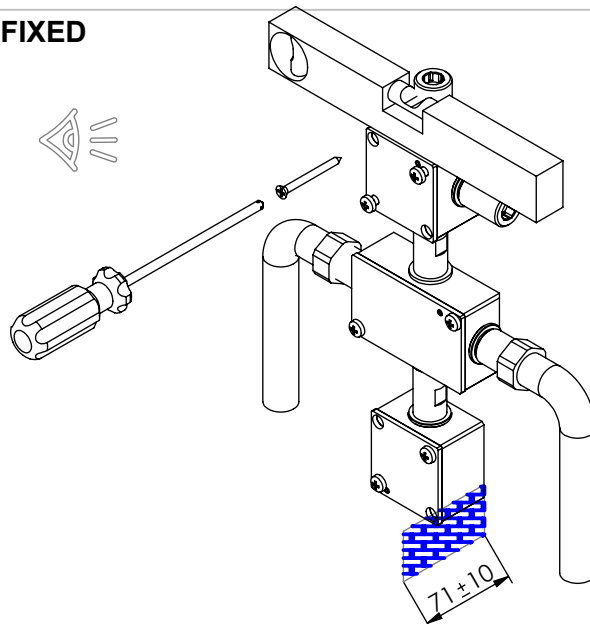
W A T E R S O U L

## INSTALLATION MANUAL

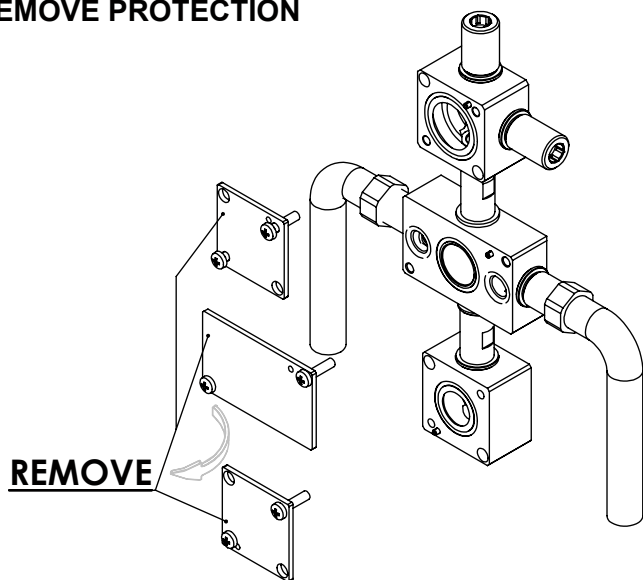
### 1 CONECTION



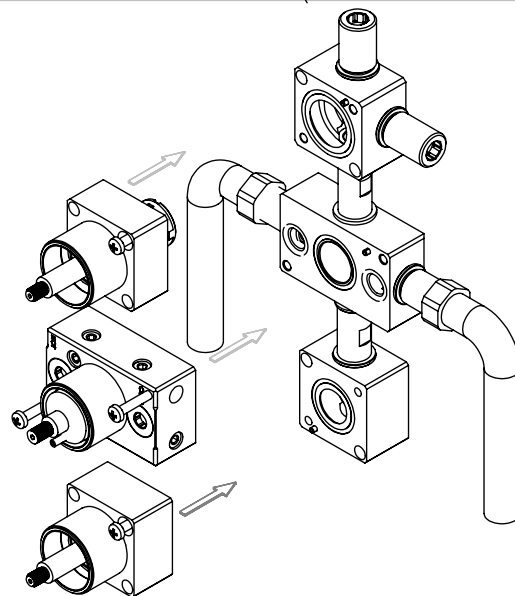
### 2 FIXED



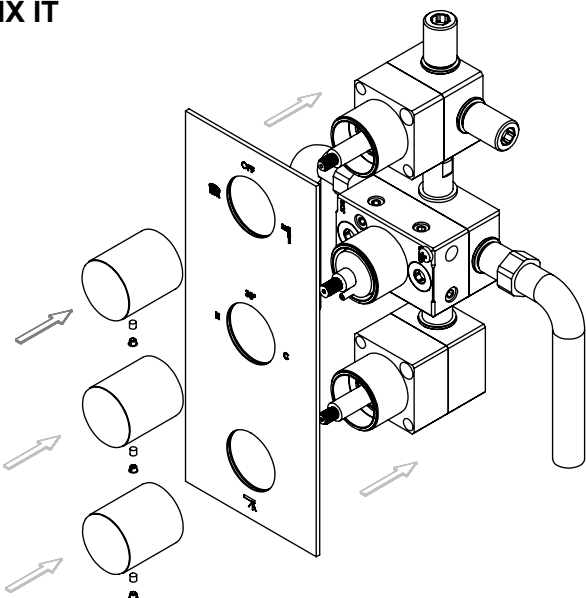
### 3 REMOVE PROTECTION



### 4 FIX IT



### 5 FIX IT



### 6 MAINTENANCE

